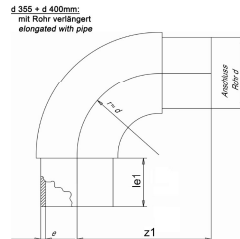


PE 100 RC Bends 90°, injected



Product details:

- black
- injected (r ~ d), with elongated spigot, for butt welding and electrofusion welding
- DIN EN ISO 15494/B, DIN EN 1555/3, DIN EN 12201/3

Product image for illustration purposes only.

SDR	d (mm)	e (mm)	le1 (mm)	z1 (mm)	Angle (°)	kg/piece	Art. No.
11	32	3.0	48	79	90	0,043	019100130
11	40	3.7	52	92	90	0,079	019100131
11	50	4.6	59	107	90	0,147	019100133
11	63	5.8	69	131	90	0,280	019100032
11	75	6.8	76	153	90	0,460	019100044
11	90	8.2	83	173	90	0,760	019100046
11	110	10.0	84	195	90	1,297	019100048
11	125	11.4	92	216	90	1,820	019100051
11	140	12.7	96	237	90	2,445	019100052
11	160	14.6	103	262	90	3,420	019100053
11	180	16.4	115	294	90	4,980	019100054
11	200	18.2	122	317	90	6,800	019100055
11	225	20.5	131	351	90	9,200	019100050
11	250	22.7	133	382	90	13,120	019100092
11	280	25.4	153	432	90	18,335	019100094
11	315	28.6	154	471	90	25,130	019100096
11	355	32.2	180	560	90	34,030	010030703
11	400	36.3	190	625	90	46,900	010030704
11	450	40.9	195	645	90	69,122	010026787
11	500	45.4	212	710	90	91,039	010026789
17	50	3.0	59	108	90	0,132	019100132
17	63	3.8	67	130	90	0,200	019100031
17	75	4.5	76	153	90	0,345	019100043
17	90	5.4	83	173	90	0,520	019100045
17	110	6.6	84	195	90	0,945	019100047
17	125	7.4	92	216	90	1,340	019100056
17	140	8.3	97	237	90	1,760	019100057
17	160	9.5	103	262	90	2,405	019100058
17	180	10.7	113	290	90	3,390	019100059
17	200	11.9	122	317	90	4,610	019100060
17	225	13.4	130	350	90	6,410	019100049
17	250	14.8	134	382	90	9,830	019100091
17	280	16.6	154	430	90	13,710	019100093
17	315	18.7	153	465	90	19,350	019100095
17	450	26.7	195	645	90	50,715	010026788
17	500	29.7	212	710	90	66,939	010026790
17,6	355	20.1	180	560	90	22,350	010030701
17,6	400	22.7	190	625	90	31,520	010030702

All information provided in respect of technical data shall be considered non-binding. This information does not constitute a guarantee of specific properties or qualities and shall not be construed as a warranty in regard to product condition, durability or service life. Subject to modifications and errors. Our standard terms and conditions apply. For further information, please contact our applications engineering team: pipingsystems@simona.de.

MSA 315 / MSA 330 / MSA 340



MSA 315 Automatic Electrofusion Unit up to d315

The MSA 315 automatic electro fusion unit combines performance and compact design, for installers who need to weld fittings up to diameter 315mm, in building technology and gas/water distribution applications. The unit is extremely simple to use, with a few basic operations required to operator: connect, confirm, scan, and start the fusion. The installer can also track operator and job code if needed.

It is robust, safe and ergonomic.

The entire welding process is controlled and regulated with energy output compensation depending on ambient temperature and the indication of cooling time.

The unit has 500 protocols permanently stored in the internal memory. The user can copy the fusion reports in an USB stick to print them out in PDF format.

Scope of delivery includes: 1 pair of angle adapter clips 4.0 mm, operating instructions and optionally a transport case

Technical Data:

- Operating temperature: -10°C to 45°C
- Fusion data input mode: bar code, manual
- Welding technique: Voltage controlled
- Mains voltage and frequency: 230V (190V - 265V), 50-60Hz
- Fusion voltage: 8-42 V
- Fusion current: 70 A (max)
- Fittings range: d20-315 mm
- Internal memory capacity: 500 protocols
- Protocols format: PDF, CSV
- Protection factor: Class 1 / IP 65
- USB Port: Type A
- Mains cable: 4 m / Fusion cable: 3 m
- Weight: 17 kg
- Display: Graphical LCD, adjustable contrast

	Type	Code	Weight (kg)
Manual mode, carton box		790 128 040	17.000
Automatic, with barcode reader, carton box		790 128 041	17.000
Transport box, automatic with barcode reader		790 128 042	17.000

ECOS 160 - 250 - 315



ECOS 160 - 250 - 315 Butt fusion machine for construction site

Butt Fusion machine to joint PE, PP, PB pipes and fittings for pressure piping systems on building sites and in trenches.

Hydraulically operated with manual control unit.

Temperature controller integrated in the heating element handle.

Including transport packaging (carton pallet); reduction clamping inserts and other accessories to be ordered separately.

• BASE MACHINE

- High precision design, distortion-free and sturdy machine frame
- Good accessibility thanks to 35° inclination
- The movable (sliding) 3rd clamp allows easy and time-saving fixation of bends or tees without need of additional tools
- Clamps are hinged on the top side and tilting. Whenever necessary, the four clamps can be quickly removed
- Double-sided heating element pull-off mechanism to optimise the change-over phase
- Weight: Type 160 = 22 kg, Type 250 = 47 kg, Type 315 = 53 kg

• HYDRAULIC UNIT

- Compact construction with protection frame
- Precise pressure setting and fine adjusting
- Joystick operation of machine carriage
- Clearly visible, vibration-free pressure gauge with precision scaling
- Accumulator for pressure equalization during the cooling phase
- Integrated interface for welding recorder
- Max operating pressure: Type 160 = 100 bar, Type 250 - 315 = 160 bar
- Weight: 22 kg

• PLANER

- Powerful parallel planer for single or double-sided facing of pipe ends
- Ergonomic, weight-balanced handling
- Self-locking mechanism in working position
- Safety microswitch to prevent undesired start-up
- Weight: Type 160 = 7 kg, Type 250 = 14 kg, Type 315 = 17 kg

• HEATING ELEMENT

- High performance, electronically controlled heating element
- High-quality, non-stick PTFE-coating with long service life
- Temperature indicator integrated into the handle
- Weight: Type 160 = 5.5 kg, Type 250 = 8 kg, Type 315 = 10 kg
- Input power: Type 160 = 1200 W, Type 250 = 2000 W, Type 315 = 2500 W

• CASE

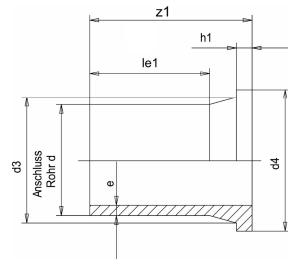
- For safe storage of planer and heating element
- Weight: Type 160 = 4.8 kg, Type 250 = 8 kg, Type 315 = 9 kg

Type	d-d (mm)	Performance	Description	Code	Weight (kg)
ECOS 160	40 - 160	230 V/1900 W	Without crate (carton pallet only)	790 150 009	78.000
ECOS 250	75 - 250	230 V/3270 W	Without crate (carton pallet only)	790 151 013	116.000
ECOS 315	90 - 315	230 V/3870 W	Without crate (carton pallet only)	790 152 028	129.000
ECOS 160	40 - 160	230 V/1900 W	With wooden transport crate	790 150 073	108.000
ECOS 250	75 - 250	230 V/3270 W	With wooden transport crate	790 151 073	166.000
ECOS 315	90 - 315	230 V/3870 W	With wooden transport crate	790 152 073	179.000

PE 100 RC Stub flanges for loose flange ISO/DIN, injected



Product image for illustration purposes only.



Product details:

- black
- injected, with elongated spigot, for butt welding and electrofusion welding
- Stub flanges for loose flange ANSI or JIS on request
- DIN EN ISO 15494/B, DIN EN 12201/3, DIN EN 1555/3

SDR	d (mm)	e (mm)	d3 (mm)	d4 (mm)	le1 (mm)	z1 (mm)	h1 (mm)	Art. No.
11	20	2,0	27	45	62	85	7	019400116
11	25	2,3	33	58	62	90	9	019400117
11	32	3,0	40	68	62	86	10	019400105
11	40	3,7	50	78	62	89	11	019400106
11	50	4,6	60	88	62	90	12	019400108
11	63	5,8	75	102	70	106	14	019400034
11	75	6,8	89	122	90	125	16	019400035
11	90	8,2	105	138	100	140	17	019400037
11	110	10,0	125	158	113	160	18	019400039
11	125	11,4	132	158	116	170	25	019400041
11	140	12,7	155	188	128	182	25	019400111
11	160	14,6	175	212	155	208	25	019400043
11	180	16,4	186	212	168	202	30	019400046
11	200	18,2	232	268	140	206	32	019400112
11	225	20,5	235	268	135	201	32	019400050
11	250	22,7	285	320	138	219	35	019400129
11	280	25,4	291	320	152	231	35	019400132
11	315	28,6	335	370	158	239	35	019400134
11	355	32,2	373	430	176	260	40	019400192
11	400	36,3	427	482	195	290	46	019400194
11	450	40,9	516	585	210	335	60	010030433
11	500	45,4	532	585	230	350	60	010030434
11	560	50,8	616	685	240	370	60	010030435
11	630	57,2	643	685	260	390	60	010030436
11	710	64,5						010022570
17	50	3,0	60	88	62	90	12	019400107
17	63	3,8	75	102	70	106	14	019400119
17	75	4,5	89	122	90	125	16	019400109
17	90	5,4	105	138	100	140	17	019400121
17	110	6,6	125	158	113	158	18	019400122
17	125	7,4	132	158	122	170	18	019400123
17	140	8,3	153	188	130	173	18	019400110
17	160	9,5	175	212	160	208	18	019400042
17	180	10,7	186	212	140	200	20	019400045
17	200	11,9	232	268	133	199	24	019400126
17	225	13,4	235	268	135	201	24	019400049
17	250	14,8	285	320	148	220	25	019400128
17	280	16,6	291	320	154	230	25	019400131
17	315	18,7	335	370	166	242	25	019400133
17	355	21,1	373	430	179	261	30	019400191
17	400	23,7	427	482	195	290	33	019400193
17	450	26,7	515	585	225	335	46	010030429
17	500	29,7	532	585	240	350	46	010030430
17	560	33,2	616	685	250	370	50	010030431
17	630	37,4	644	685	270	390	50	010030432
17	710	42,1						010022568
17	800	47,4						010033922
17	900	53,3						010033925
26	710	27,2						010033921
26	800	30,6						010033923
26	900	34,4						010033926
33	710	21,8						010022569
33	800	24,5						010033924
33	900	27,6						010033927

All information provided in respect of technical data shall be considered non-binding. This information does not constitute a guarantee of specific properties or qualities and shall not be construed as a warranty in regard to product condition, durability or service life. Subject to modifications and errors. Our standard terms and conditions apply. For further information, please contact our applications engineering team: pipingsystems@simona.de.

Rotary peelers



Rotary Peeler RS

Note:

This innovative Rotary Peeler RS is designed to use for universal peeling at the pipe end, for electrofusion couplings, tees and elbows and as well as for electrofusion saddles. Suitable for peeling of pipes made out of PE 80, PE 100, PEX, PP.

d (mm)	Article	Code	Weight (kg)
40	RS 40	790 136 001	2.340
50	RS 50	790 136 002	2.115
63	RS 63	790 136 003	2.090
75	RS 75	790 136 004	2.350
90	RS 90	790 136 005	2.460
110	RS 110	790 136 006	2.430
125	RS 125	790 136 007	3.895
140	RS 140	790 136 008	3.890
160	RS 160	790 136 009	3.790
180	RS 180	790 136 010	4.150
200	RS 200	790 136 011	3.995
225	RS 225	790 136 012	3.935
250	RS 250	790 136 013	5.575
280	RS 280	790 136 014	5.440
315	RS 315	790 136 015	5.380



Replacement blade to Rotary Peeler RS

d-d (mm)	Description	Code	Weight (kg)
40 - 315	Hard metal	790 136 100	0.013



Transport cases for Rotary Peeler RS

- Included in the scope of delivery of the Rotary Peeler RS

Article	Code	Weight (kg)	Dimension (mm)	Description
RSTC 40-63	790 136 221	0.718	343 - 277 - 125	for RS 40-RS 63
RSTC 75-110	790 136 222	0.870	343 - 277 - 125	for RS 75-RS 110
RSTC 125-160	790 136 223	0.870	490 - 400 - 153	for RS 125-RS 160
RSTC 180-225	790 136 213	1.796	450 - 360 - 132	for RS 180-RS 225
RSTC 250-315	790 136 214	2.901	566 - 435 - 156	for RS 250-RS 315

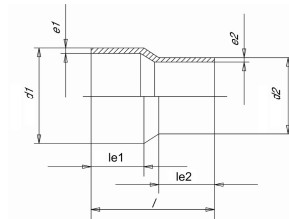


Rotary peeling tool RST 1000

- The flexible peeling tool RST 1000 is suitable for preparing welding zones of saddle and coupler jointings for Electrofusion fittings
- To ensure the constant removal of the oxidation layer for PE80 and PE100, a long lasting peeling blade made of carbide is used
- Easy-to-hinge chain links enable the staged operation of pipes d250 to d1000 mm
- Compensation for ovality and variable pipe diameters with loaded spring component in the chain
- Scope of delivery includes: various chain links, spare blade, transport box
- Size transport box = 58 x 48 x 15cm

d-d (mm)	Code	Weight (kg)
250 - 1000	799 300 799	10.552

PE 100 RC Reducers concentric, injected



Product details:

- black
- injected, with elongated spigot, for butt welding and electrofusion welding
- DIN EN ISO 15494/B, DIN EN 12201/3, DIN EN 1555/3

Product image for illustration purposes only.

SDR	d1 (mm)	d2 (mm)	e (mm)	e2 (mm)	le1 (mm)	le2 (mm)	Length (mm)	Art. No.
11	25	20	2,3	1,9	41	41	90	010013260
11	32	20	3,0	2	44	41	101	010013261
11	32	25	3,0	2,3	44	41	100	010013262
11	40	25	3,7	2,3	49	41	104	010013264
11	40	32	3,7	2,9	49	44	105	010013265
11	50	25	4,6	2,3	56	42	132	010013266
11	50	32	4,6	2,9	57	47	132	010013267
11	50	40	4,6	3,7	55	51	134	010013268
11	63	32	5,8	2,9	63	44	144	010013269
11	63	40	5,8	3,7	63	49	147	010013270
11	63	50	5,8	4,6	64	58	152	010013271
11	75	50	6,8	4,6	70	55	155	010013273
11	75	63	6,8	5,8	70	65	171	010013274
11	90	50	8,2	4,6	79	57	174	010013275
11	90	63	8,2	5,8	79	70	182	010013276
11	90	75	8,2	6,8	79	70	180	010013277
11	110	63	10,0	5,8	84	69	185	010013279
11	110	75	10,0	6,8	84	74	185	010013280
11	110	90	10,0	8,2	84	81	186	010013281
11	125	63	11,4	5,8	91	69	200	010013282
11	125	90	11,4	8,2	91	80	202	010013283
11	125	110	11,4	10	90	90	200	010013284
11	140	90	12,7	8,2	112	86	237	010013286
11	140	110	12,7	10	116	90	230	010013287
11	140	125	12,7	11,4	117	96	235	010013288
11	160	90	14,6	8,2	109	84	254	010013289
11	160	110	14,6	10	110	89	254	010013290
11	160	125	14,6	11,4	110	95	254	010013291
11	160	140	14,6	12,7	110	106	254	010013292
11	180	90	16,4	8,2	106	79	245	010013293
11	180	110	16,4	10	124	93	275	010013294
11	180	125	16,4	11,4	105	87	245	010013295
11	180	160	16,4	14,6	126	125	279	010013297
11	200	140	18,2	12,7	123	114	279	010013298
11	200	160	18,2	14,6	122	122	277	010013299
11	200	180	18,2	16,4	126	120	279	010013300
11	225	160	20,5	14,6	132	123	295	010013302
11	225	180	20,5	16,4	130	118	285	010013303
11	225	200	20,5	18,2	126	120	272	010013304
11	250	160	22,7	14,6	149	100	308	010013305
11	250	180	22,7	16,4	151	105	316	010013306
11	250	200	22,7	18,2	151	116	324	010013307
11	250	225	22,7	20,5	155	122	330	010013308
11	280	200	25,4	18,2	140	116	345	010013309
11	280	225	25,4	20,5	142	122	335	010013310
11	280	250	25,4	22,7	139	135	340	010013311
11	315	225	28,6	20,5	150	125	365	010013312
11	315	250	28,6	22,7	150	134	365	010013313
11	315	280	28,6	25,4	150	145	365	010013314
17	63	32	3,8	2,9	63	46	142	019700198
17	63	50	3,8	3	64	58	152	019700200
17	75	63	4,5	3,8	70	63	166	014900879
17	90	63	5,4	3,8	79	63	182	014900880
17	90	75	5,4	4,5	80	73	185	014900881

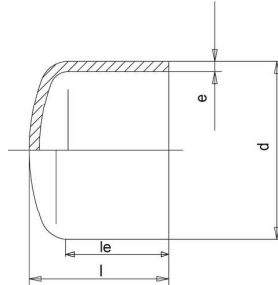
SDR	d1 (mm)	d2 (mm)	e (mm)	e2 (mm)	le1 (mm)	le2 (mm)	Length (mm)	Art. No.
17	110	63	6,6	3,8	84	69	185	014900795
17	110	75	6,6	4,5	83	73	183	019700273
17	110	90	6,6	5,4	83	80	185	014900796
17	125	63	7,4	3,8	90	68	200	014900797
17	125	90	7,4	5,4	90	81	200	014900798
17	125	110	7,4	6,6	91	90	200	014900799
17	140	90	8,3	5,4	112	86	235	019700432
17	140	110	8,3	6,6	114	91	237	019700222
17	140	125	8,3	7,4	117	96	235	014900882
17	160	90	9,5	5,4	109	84	254	014900800
17	160	110	9,5	6,6	110	89	254	014900211
17	160	125	9,5	7,4	110	95	254	014900801
17	160	140	9,5	8,3	110	106	254	014900802
17	180	90	10,7	5,4	105	80	244	019700326
17	180	110	10,7	6,6	124	93	275	019700441
17	180	125	10,7	7,4	105	87	250	014900883
17	180	140	10,7	8,3	123	114	277	019700223
17	180	160	10,7	9,5	126	125	279	014900884
17	200	140	11,9	8,3	123	114	279	019700442
17	200	160	11,9	9,5	122	124	278	014900212
17	200	180	11,9	10,7	126	120	279	019700224
17	225	140	13,4	8,3	133	114	290	014900803
17	225	160	13,4	9,5	134	123	295	014900213
17	225	180	13,4	10,7	125	118	275	014900804
17	225	200	13,4	11,9	126	120	272	019700443
17	250	160	14,8	9,5	151	98	308	014901043
17	250	180	14,8	10,7	153	105	316	014901044
17	250	200	14,8	11,9	154	113	325	014901045
17	250	225	14,8	13,4	155	122	330	014901046
17	280	200	16,6	11,9	142	116	330	019700146
17	280	225	16,6	13,4	140	124	335	019700140
17	280	250	16,6	14,8	139	134	340	019700147
17	315	225	18,7	13,4	152	125	371	019700148
17	315	250	18,7	14,8	151	133	367	019700134
17	315	280	18,7	16,6	150	140	369	019700159

All information provided in respect of technical data shall be considered non-binding. This information does not constitute a guarantee of specific properties or qualities and shall not be construed as a warranty in regard to product condition, durability or service life. Subject to modifications and errors. Our standard terms and conditions apply. For further information, please contact our applications engineering team: pipingsystems@simona.de.

PE 100 RC End caps, injected



Product image for illustration purposes only.



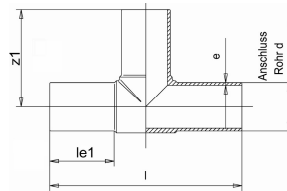
Product details:

- black
- injected, with elongated spigot, for butt welding and electrofusion welding
- DIN EN ISO 15494/B, DIN EN 12201/3, DIN EN 1555/3

SDR	d (mm)	e (mm)	le (mm)	PN (bar)	Length (mm)	Art. No.
11	20	1,9	41	16	49	013900314
11	25	2,3	41	16	50	013900315
11	32	2,9	46	16	56	013900316
11	40	3,7	49	16	61	013900317
11	50	4,6	58	16	71	013900320
11	63	5,8	66	16	84	013900323
11	75	6,8	73	16	94	013900326
11	90	8,2	82	16	109	013900329
11	110	10,0	88	16	122	013900332
11	125	11,4	93	16	128	013900335
11	140	12,7	97	16	136	013900338
11	160	14,6	108	16	156	013900341
11	180	16,4	113	16	167	013900344
11	200	18,2	117	16	180	013900347
11	225	20,5	127	16	203	013900350
11	250	22,7	138	16	217	019600003
11	280	25,4	151	16	239	019600056
11	315	28,6	158	16	256	019600062
11	355	32,2	175	16	291	019600058
11	400	36,3	193	16	316	019600060
17	50	3,0	59	10	70	013900319
17	63	3,8	66	10	83	013900322
17	75	4,5	72	10	94	013900325
17	90	5,4	81	10	109	013900328
17	110	6,6	88	10	121	013900331
17	125	7,4	92	10	127	013900334
17	140	8,3	97	10	136	013900337
17	160	9,5	107	10	155	013900340
17	180	10,7	114	10	166	013900343
17	200	11,9	117	10	179	013900346
17	225	13,4	127	10	203	013900349
17	250	14,8	140	10	216	019600054
17	280	16,6	149	10	238	019600055
17	315	18,7	158	10	258	019600061
17	355	21,1	175	10	281	019600057
17	400	23,7	195	10	310	019600059

All information provided in respect of technical data shall be considered non-binding. This information does not constitute a guarantee of specific properties or qualities and shall not be construed as a warranty in regard to product condition, durability or service life. Subject to modifications and errors. Our standard terms and conditions apply. For further information, please contact our applications engineering team: pipingsystems@simona.de.

PE 100 RC Tees, injected



Product image for illustration purposes only.

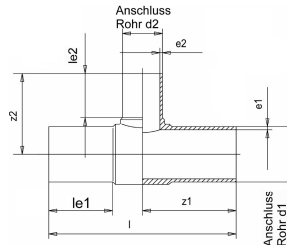
Product details:

- black
- injected, with elongated spigot, for butt welding and electrofusion welding
- DIN EN ISO 15494/B, DIN EN 12201/3, DIN EN 1555/3

SDR	d (mm)	e (mm)	le1 (mm)	z1 (mm)	Length (mm)	kg/piece	Art. No.
11	20	2.0	41	54	108	0,020	010300713
11	25	2.3	41	60	120	0,033	010300714
11	32	2.9	46	67	139	0,060	010300592
11	40	3.7	52	82	165	0,112	010300593
11	50	4.6	57	92	184	0,187	010300595
11	63	5.8	65	105	216	0,335	010300597
11	75	6.8	72	122	248	0,545	010300128
11	90	8.2	80	137	277	0,940	010300600
11	110	10.0	88	162	321	1,579	010300602
11	125	11.4	98	176	350	2,240	010300129
11	140	12.7	104	200	399	3,180	010300605
11	160	14.6	104	206	413	4,290	010300130
11	180	16.4	143	260	528	6,890	010300131
11	200	18.2	124	253	505	8,330	010300609
11	225	20.5	129	278	559	11,700	010300133
11	250	22.7	132	291	582	13,950	010300135
11	280	25.4	133	312	622	18,860	010300611
11	315	28.6	153	351	690	26,370	010300613
11	355	32.2	167	414	829	38,100	019300087
11	400	36.3	198	457	913	52,010	019300089
11	450	40.9	198	477	954	74,585	019300206
11	500	45.4	218	525	1050	100,000	019300208
11	560	50.8	245	600	1200	142,000	010030447
11	630	57.2	265	650	1300	188,000	010030448
17	50	3.0	57	90	184	0,130	010300594
17	63	3.8	64	106	214	0,238	010300596
17	75	4.5	72	122	246	0,395	010300598
17	90	5.4	81	137	277	0,690	010300599
17	110	6.6	84	161	321	1,120	010300601
17	125	7.4	100	174	345	1,564	010300603
17	140	8.3	104	197	395	2,215	010300604
17	160	9.5	104	206	410	3,010	010300606
17	180	10.7	141	260	525	4,875	010300607
17	200	11.9	123	250	501	5,695	010300608
17	225	13.4	129	276	555	8,260	010300725
17	250	14.8	132	288	576	9,380	010300726
17	280	16.6	132	309	617	12,980	010300610
17	315	18.7	153	346	695	17,650	010300612
17	355	21.1	165	408	818	25,975	019300086
17	400	23.7	197	455	910	36,060	019300088
17	450	26.7	197	478	955	50,615	019300205
17	500	29.7	218	525	1050	68,400	019300207
17	560	33.2	245	600	1200	139,000	010030445
17	630	37.4	265	650	1300	185,000	010030446

All information provided in respect of technical data shall be considered non-binding. This information does not constitute a guarantee of specific properties or qualities and shall not be construed as a warranty in regard to product condition, durability or service life. Subject to modifications and errors. Our standard terms and conditions apply. For further information, please contact our applications engineering team: pipingsystems@simona.de.

PE 100 RC Tees with reduced branch, injected



Product details:

- black
- injected, with elongated spigot, for butt welding and electrofusion welding
- more designs, see page 48
- Based on DIN EN ISO 15494/B, DIN EN 12201/3, DIN EN 1555/3

Product image for illustration purposes only.

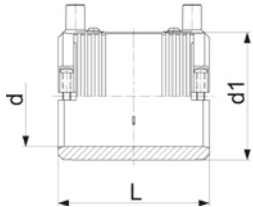
SDR	d1 (mm)	d2 (mm)	e (mm)	e2 (mm)	le1 (mm)	le2 (mm)	z1 (mm)	z2 (mm)	Length (mm)	kg/piece	Art. No.
11	63	32	5,8	3	65	47	109	86	218	0,280	010025983
11	63	40	5,8	3,7	65	52	109	93	218	0,290	010025984
11	63	50	5,8	4,6	63	56	108	103	215	0,313	013500846
11	75	32	6,8	2,9	70	46	128	108	256	0,455	013500847
11	75	50	6,8	4,6	70	56	127	113	253	0,485	013500848
11	75	63	6,8	5,8	70	63	128	117	255	0,520	013500849
11	90	50	8,2	4,6	81	59	135	120	280	0,810	013500692
11	90	63	8,2	5,8	81	65	141	127	282	0,840	013500693
11	90	75	8,2	6,8	73	68	136	138	272	0,800	013500850
11	110	63	10,0	5,8	88	67	162	148	322	1,400	013500694
11	110	75	10,0	6,8	82	70	155	151	309	1,425	013500851
11	110	90	10,0	8,2	88	82	161	164	322	1,495	013500695
11	125	110	11,4	10	90	83	171	170	341	1,860	013500852
11	160	63	14,6	5,8	105	65	208	174	416	3,605	013500853
11	160	75	14,6	6,8	98	74	172	180	343	2,295	010033241
11	160	90	14,6	8,2	104	83	206	190	415	3,690	013500696
11	160	110	14,6	10	104	89	207	200	414	3,865	013500697
11	180	90	16,4	8,2	108	82	238	200	476	4,857	022300040
11	180	110	16,4	10	107	84	240	202	475	4,750	022300051
11	180	160	16,4	14,6	110	101	240	220	480	5,560	013500855
11	200	90	18,2	8,2	124	82	250	216	500	6,895	022300054
11	200	110	18,2	10	124	86	253	219	505	7,060	022300055
11	200	160	18,2	14,6	120	101	253	237	500	7,445	022300056
11	225	75	20,5	6,8	129	73	280	219	560	9,750	013500856
11	225	90	20,5	8,2	129	82	275	228	555	9,850	013500698
11	225	110	20,5	10	130	86	278	238	559	10,100	013500699
11	225	160	20,5	14,6	128	107	277	258	556	10,485	013500700
11	225	180	20,5	16,4	130	108	280	284	559	10,915	013500857
11	250	110	22,7	10	133	85	288	248	584	11,685	022300124
11	250	160	22,7	14,6	134	102	292	266	586	12,180	022300125
11	315	110	28,6	10	155	85	346	282	706	22,150	022300100
11	315	160	28,6	14,6	155	101	352	301	705	22,730	022300101
11	315	200								18,710	010033914
11	315	225	28,6							20,160	022300083
11	315	250	28,6	22,7	154	135	346	331	695	24,345	022300082
17	63	50	3,8	3	61	56	108	103	217	0,220	013500834
17	75	50	4,5	3	68	56	126	109	252	0,410	013500836
17	75	63	4,5	3,8	69	62	126	116	252	0,440	013500837
17	90	50	5,4	3	80	59	139	118	278	0,600	013500685
17	90	63	5,4	3,8	81	65	135	127	275	0,610	013500686
17	90	75	5,4	4,5	74	71	136	139	272	0,681	013500838
17	110	63	6,6	3,8	88	67	162	147	320	1,010	013500687
17	110	75	6,6	4,5	84	70	158	152	315	0,880	013500839
17	110	90	6,6	5,4	86	81	154	160	318	1,055	013500688
17	125	110	7,4	6,6	84	83	167	168	334	1,320	013500840
17	160	63	9,5	3,8	103	65	205	172	411	2,525	013500841
17	160	75	9,5	4,5	98	74	172	180	343	1,920	013500842
17	160	90	9,5	5,4	104	82	206	190	412	2,610	013500689
17	160	110	9,5	6,6	103	88	206	198	412	2,695	013500690
17	180	90	10,7	5,4			210	200	420	2,780	022300047
17	180	110								4,320	010033911
17	180	160	10,7	9,5	105	94	200	205	411	3,540	013500843
17	200	90	11,9	5,4	125	82	253	216	504	5,015	022300058
17	200	110	11,9	6,6	124	85	254	219	506	5,155	022300059

SDR	d1 (mm)	d2 (mm)	e (mm)	e2 (mm)	le1 (mm)	le2 (mm)	z1 (mm)	z2 (mm)	Length (mm)	kg/piece	Art. No.
17	200	160	11,9	9,5	120	101	255	235	500	5,430	022300060
17	225	75	13,4	4,5	129	72	279	219	561	7,060	013500844
17	225	90	13,4	5,4	129	82	276	226	555	7,010	013500691
17	225	110	13,4	6,6	130	86	277	236	556	7,150	013500110
17	225	160	13,4	9,5	128	107	277	255	555	7,220	013500111
17	225	180	13,4	10,7	128	107	281	284	558	7,795	013500845
17	250	110	14,8	6,6	133	85	288	242	580	8,095	022300121
17	250	160	14,8	9,5	133	101	288	261	580	8,700	022300122
17	315	110	18,7	6,6	155	84	350	277	699	15,860	022300098
17	315	160	18,7	9,5	153	102	349	300	695	15,585	022300099
17	315	200								17,910	010033915
17	315	225	18,7							16,040	022300148
17	315	250	18,7	14,8	154	135	349	329	695	16,625	022300123

All information provided in respect of technical data shall be considered non-binding. This information does not constitute a guarantee of specific properties or qualities and shall not be construed as a warranty in regard to product condition, durability or service life. Subject to modifications and errors. Our standard terms and conditions apply. For further information, please contact our applications engineering team: pipingsystems@simona.de.

ELGEF Plus electrofusion

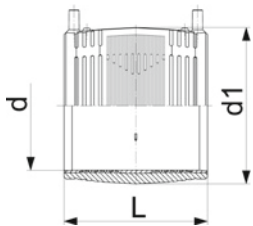
Couplers



ELGEF Plus Electrofusion coupler PE100
d20-63mm / SDR11

- 10 bar Gas / 16 bar Water
- 4 mm pin connectors
- Limited path fusion indicators
- Removable centre stop
- With integral pipe fixation

d (mm)	SDR	PN (bar)	DN (mm)	Code	Weight (kg)	d1 (mm)	L (mm)	SDR pipe
20	11	16	15	753 911 606	0.053	31	70	9-11
25	11	16	20	753 911 607	0.050	36	70	9-11
32	11	16	25	753 911 608	0.071	44	72	9-11
40	11	16	32	753 911 609	0.095	54	80	9-11
50	11	16	40	753 911 610	0.131	66	88	9-11
63	11	16	50	753 911 611	0.194	81	96	9-17.6



ELGEF Plus Electrofusion coupler PE100
d75-315mm / SDR11

- 10 bar Gas / 16 bar Water
- 4 mm pin connectors
- Limited path fusion indicators
- Removable centre stop up to d160
- 1) FM 1613 approved – 15 bar

d (mm)	SDR	PN (bar)	DN (mm)	Code	Weight (kg)	d1 (mm)	L (mm)	SDR pipe
75	11	16	65	753 911 612	0.282	96	110	9-17.6
1	90	11	16	753 911 613	0.406	113	125	9-17.6
1	110	11	16	753 911 614	0.692	138	145	9-17.6
1	125	11	16	753 911 615	0.718	154	156	9-17.6
1	140	11	16	753 911 616	0.945	172	166	9-17.6
1	160	11	16	753 911 617	1.362	196	180	9-17.6
1	180	11	16	753 911 618	1.747	219	192	9-17.6
1	200	11	16	753 911 619	1.866	244	208	9-17.6
1	225	11	16	753 911 620	3.329	273	225	9-17.6
1	250	11	16	753 911 621	4.678	304	248	9-17.6
1	280	11	16	753 911 622	7.500	340	252	9-17.6
1	315	11	16	753 911 623	8.142	382	267	9-17.6